



MATERIALS LIST:

Professional Watercolour Colours:

- Cadmium-Free Lemon
- Winsor Orange (Red Shade)
- Opera Rose
- Quinacridone Violet
- French Ultramarine
- Winsor Blue (Green Shade)
- Indigo
- Aqua Green
- Cobalt Turquoise Light
- Green Gold

Promarker Watercolour:

- Mid Blue
- Quinacridone Magenta

Designers' Gouache:

- Permanent White

Watercolour Mediums:

Colourless Masking Fluid

**Note: Use an inexpensive brush to mask and then wash the brush out immediately with warm, soapy water.*

Surface Recommendations:

Fabriano Artístico Watercolour Paper A3 - 300gsm. Texture - Rough.

**Note: A rough texture accentuates the granulation of the Aqua Green.*

Additional:

Delicate Masking Tape to tape the paper edges if desired.



WINSOR
&
NEWTON™

PROFESSIONAL WATERCOLOUR



REEF

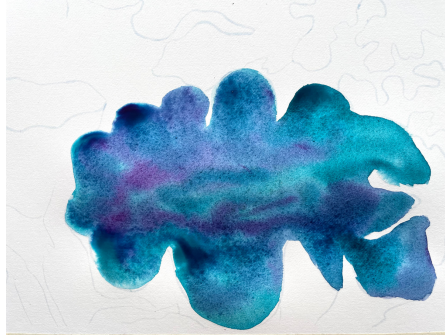


Overview Key of steps 1 - 6



Step 1

Use Colourless Masking Fluid on the top right coral shape and dots on the bottom rounded coral shape. See picture for reference.



Step 2

Colours: Aqua Green, Quinacridone Violet
Add a delicate undertone wash of Aqua Green to the entire top of the clam. Drop in mid-tone washes of both colour and let them bleed into each other.



Step 3

Colour: Winsor Orange (Red Shade)
Use an undertone - mid-tone wash on the coral shape on the far right.



Step 4

Colours: Opera Rose
Apply a delicate wash on the coral shape shown above.



Step 5

Colours: French Ultramarine, Quinacridone Violet, Opera Rose
Use Ultramarine as a mid-tone wash to cover parts of this coral. Mix: Quin Violet or Opera Rose with the Ultramarine and finish off the coral for subtle variation



Step 6

Colour: Quinacridone Violet
Cover entire coral behind the clam with an undertone wash of Quin Violet.



REEF



Overview Key of steps 7 - 14



Step 7

Colours: Green Gold

Create loose varied leaf shapes of the sea help moving in the water.



Step 8

Colours: Quinacridone Violet, Green Gold

Mix these two colours to make a warm brown. As a mid-tone wash block in the rock shape on the bottom left of your artwork. Add dimension to the coral with Quin Violet.



Step 9

Colours: Quinacridone Violet, Green Gold

Drop in a mix of mostly Quin Violet with a little Green Gold into the wet wash of the rock and let the colours bleed out gently.



Step 10

Colours: Quinacridone Violet, French Ultramarine .

Use a mass-tone of Quin Violet to add wavy line work to suggest the shape of the coral. Use Ultramarine to add depth to the inside of the coral, blend upwards with a little water to soften and create a gradient towards the edge.



Step 11

Colours: Winsor Orange (Red Shade)

Add detail texture with a mid-tone of the orange. Create this texture with the brush drawing circles, effectively drawing spirals that move around the coral and intersect over each other.



Step 12

Colour: Opera Rose, Winsor Orange (Red Shade)

Add vein detail to the pink coral with Opera Rose and Winsor Orange (Red Shade) on the edges of the coral to create variance.



**WINSOR
&
NEWTON™**

PROFESSIONAL WATERCOLOUR



REEF

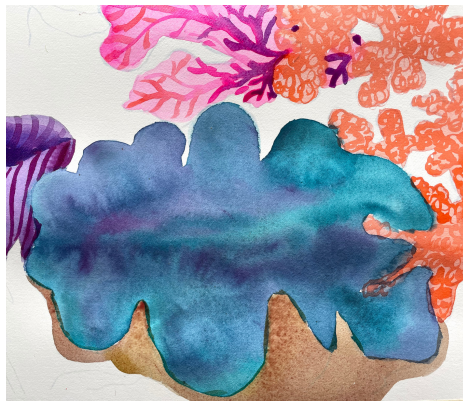


Overview Key of steps 15 - 18



Step 13

Colours: Quinacridone Violet, Opera Rose.
Where the pink coral tucks behind the orange coral, use some Quin Violet for the line detail in the coral.
Complete the coral linework with Opera Rose.



Step 14

Colours: Green Gold, Quinacridone Violet
Mix to create a mid-tone brown and use on the clam shell.



Step 15

Colours: Aqua Green, Winsor Orange (Red Shade)
Mix together to create an alternative black.
Use this black on the fish, referring to the above guideline image.



Step 16

Colours: Winsor Orange (Red Shade), Opera Rose.
Apply a thin undertone wash of Opera Rose to the entire coral shape. Mix both colours and add to create different peaches and pinks.



Step 17

Colours: Opera Rose
Drop some bright mass-tone colour to the existing wash to create a sense of 3D forms. Place darker colour around the shapes to suggest rounded coral formations.



Step 18

Colour: Cadmium-free Lemon, Winsor Orange (Red Shade)
Add a wash of Cad-free Lemon to the oval shaped coral pictured. Then add a little Winsor Orange (Red Shade), allowing the colours to blend.



**WINSOR
&
NEWTON™**

PROFESSIONAL WATERCOLOUR



REEF



Overview Key of steps 19 - 24



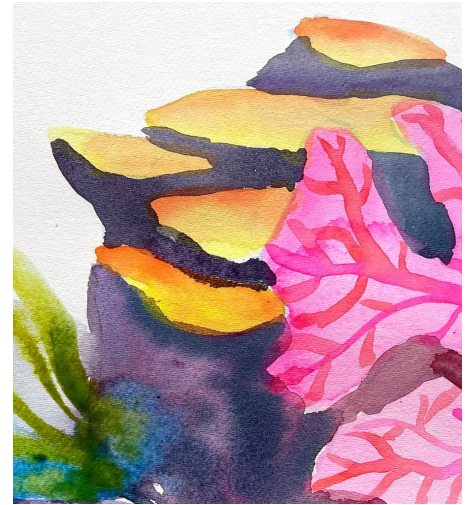
Step 19

Colours: French Ultramarine, Quin Violet
On the right side of the artwork, place a wash of rich Ultramarine as pictured - around the clam, orange coral and meeting the base of the sea kelp. Add some Quin Violet in places to suggest rock in shadow texture.



Step 20

Colours: Green Gold
Add the sea kelp in the foreground bottom area using the Green Gold.



Step 21

Colours: Winsor Orange (Red Shade), Quin Violet and Winsor Blue (Green Shade)
Mix to create varied warmer or cooler purples. Add to the coral "pads" to create the rock as shown. Blur into a bluer purple at the base.



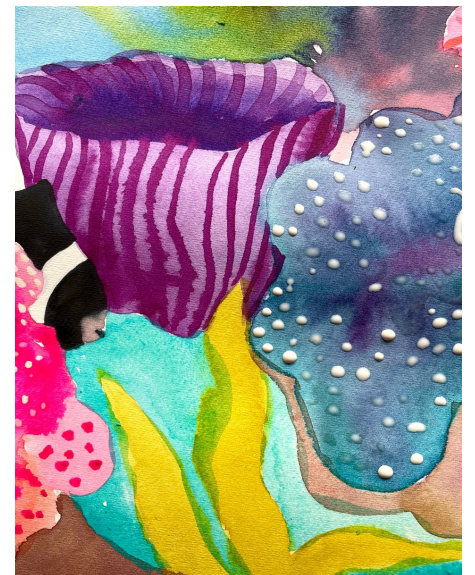
Step 22

Colours: Winsor Orange (Red Shade), Winsor Blue (Green Shade), Green Gold.
Mix the Orange and Blue together to create a soft delicate greyed-blue wash. Place by rock shelf. Use Winsor Blue (Green Shade) from blue coral as shown.
Add sea kelp on side of rock shelf using the Green Gold.



Step 23

WN WC Medium used: Masking Fluid.
Apply Masking Fluid to the dry wash of the clam interior. Use a pattern of swirls and dots. Allow to dry.



Step 24

Colour: Cobalt Turquoise Light
Add a mid-tone wash of this colour in the space between the kelp, fish and coral edges.



WINSOR
&
NEWTON™

PROFESSIONAL WATERCOLOUR



REEF



Overview Key of steps 25 - 30



Step 25

Colours: Indigo

Place shadows behind the blue coral with Indigo to make the coral form stand out.



Step 26

Colours: Quinacridone Magenta Promarker Watercolour.

Add detail dot and linear outline to the pink coral. These can be softened with a brush dipped in water or left as is.



Step 27

Colours: Mid Blue and Quinacridone Magenta Promarker Watercolour

Use Mid Blue Promarker Watercolour to create dotted detail to the blue coral. Use Quinacridone Magenta Promarker Watercolour to fill in gaps behind pink coral.



Step 28

Colours: Cobalt Turquoise Light

Add a wash of Cobalt Turquoise Light to the water on the top right and fading into where the existing water lined up with the rock shelf.



Step 29

Colours: Aqua Green, Indigo, Winsor Blue (Green Shade)

Blend Aqua Green as a medium wash from the top left and fade into the Cobalt Turquoise Light wash. Add a mid - mass-tone wash of Aqua Green behind the white coral. Drop in Winsor Blue (Green Shade) to right of white coral base. Below this, add Indigo.



Step 30

Colour: Quinacridone Magenta and Mid Blue Promarker Watercolour.

Draw sea kelp shadowed lines into the damp wash and allow the lines to blur.



WINSOR
&
NEWTON™

PROFESSIONAL WATERCOLOUR



REEF



Overview Key of steps 37 - 42



Step 37

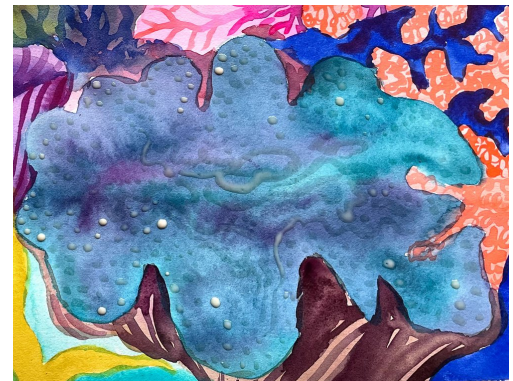
Colours: French Ultramarine, Winsor Orange (Red Shade).

Mix a little of each colour with lots of water to create a soft grey. Add to the white of the fish where it is behind the coral to add shadow to the white of the fish.



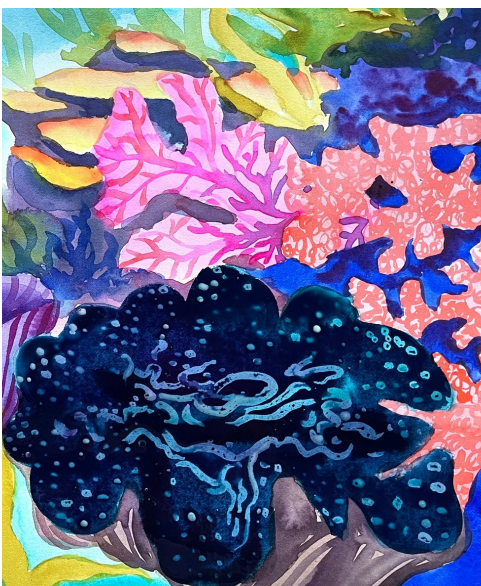
Step 38

Colours: Green Gold, Cobalt Turquoise Light. Add more sea kelp to the wet water area, allow to blur into places wet in wet.



Step 39

Colours: Quinacridone Violet, Green Gold. Mix above colours to create a brown and add linear details and shadow to the clam shell..



Step 40

Colours: Quinacridone Violet, Aqua Green, Indigo. Mix Quin Violet & Aqua Green to create a dark purple. Add as mid - dark wet wash over the clam (not shell). Drop some dark Indigo onto this. Allow to dry well.



Step 41

Remove masking fluid from all the masked areas, once all the paint is completely dry. You may wish to wash a delicate shadow or subtle colour into the exposed white coral.



Step 42

Colours: Permanent White Designers' Gouache, Winsor Blue (Green Shade). Mix to make a pastel blue and apply little rounded nodules to the end of the blue coral pieces (as shown).