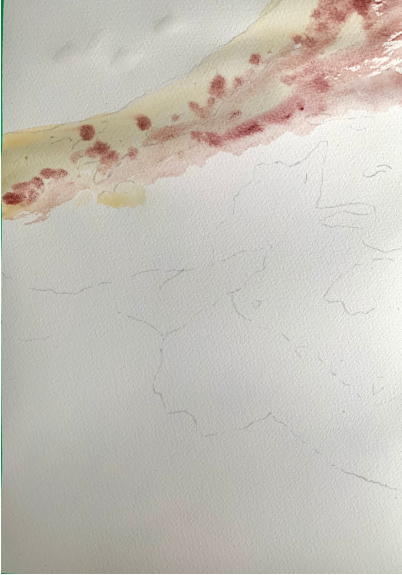


# landscape collection

## Aerial Pilbara land meets sea

### Step 1



Colours: Potter's Pink, Winsor Lemon, Burnt Sienna

- Mix Winsor Lemon & Burnt Sienna.
- Use as undertone on all area shown above.
- Add Potter's Pink in dabs of midtone.

### Step 2



Colours: Burnt Sienna & Permanent Rose

- Splatter Burnt Sienna as an undertone.
- Mix Burnt Sienna & Permanent Rose together to create a toasty red.
- Use as an undertone and midtone to splatter into wet area (see above).

### Step 3



Colours: Potter's Pink, Burnt Sienna, Winsor Lemon

- Mix Winsor Lemon and Burnt Sienna & layer a gentle undertone to beach area.
- Blend in a layer of mid tone Potter's Pink.
- Use a moderate amount of water to enhance the granulation dispersion.

### Step 4



Colours: Payne's Gray

- Drop little brush dabs of Payne's Gray in to suggest rock forms.

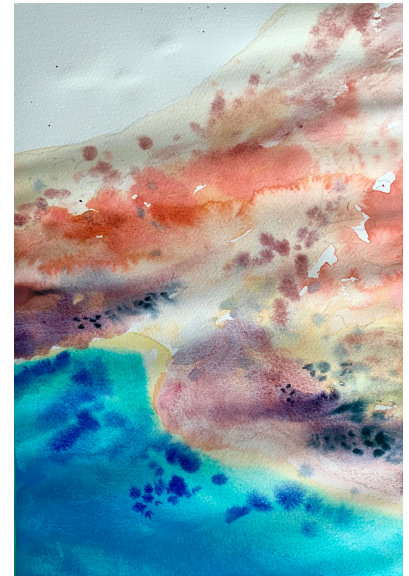
### Step 5



Colours: Winsor Lemon, Burnt Sienna, Cobalt Turquoise Light, Smalt.

- Mix Burnt Sienna and Winsor Lemon. Use to create sand line before adding water.
- From coast line paint in mid tone of Cobalt Turquoise Light, gradually add more mass tone. Add Smalt in at the bottom of the sea.

### Step 6



Colours: Smalt

- Add wet into wet dabs of the smalt at mid-mass tone to create suggestion of shadows in the water.

# landscape collection

## Aerial Pilbara

land meets sea

### Step 7



Colours: Potter's Pink, Smalt, Winsor Lemon, Burnt Sienna

- Add Potter's Pink wash to upper left in parts.
- Dab variants of mixes in to this wash: Burnt Sienna & Winsor Lemon, Burnt Sienna & Permanent Rose, Smalt & Permanent Rose.

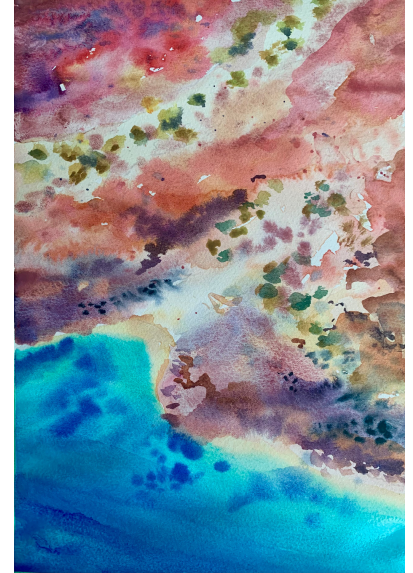
### Step 8



Colours: Winsor Lemon, Burnt Sienna, Cobalt Turquoise Light, Smalt

- Dab smalt into top left wash.
- Mix Winsor Lemon, Burnt Sienna and Cobalt Turquoise Light. Dab in trees. Add Smalt & Winsor Lemon or Winsor Lemon & Payne's Gray for darker tones.

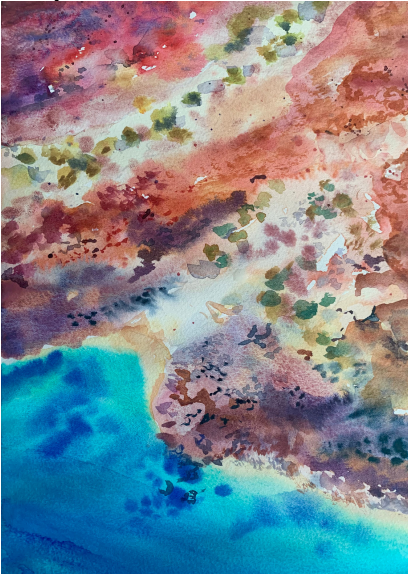
### Step 9



Colours: Burnt Sienna & Smalt

- Mix Burnt Sienna with a touch of Smalt to create a brown. Add to bottom right area of the land.

### Step 10



Colours: Smalt, Burnt Sienna, Payne's Gray, Permanent Rose.

- Mix together Payne's Gray & Permanent Rose & use to add some dark detail in rock.
- Use other colours as desired to add any extra suggested texture as desired.