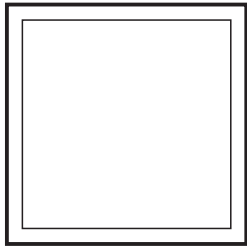
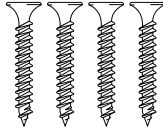


## HARDWARE INCLUDED:

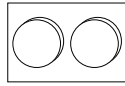


Floater Frame  
(x1)

### Framing Hardware:

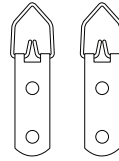


Bugle Head  
Screws (x4)

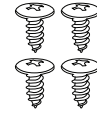


Adhesive Dots  
(x2)

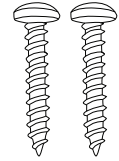
### Hanging Hardware:



Hanging Hooks  
(x2)



Button Head  
Screws (x4)

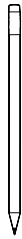


Mushroom  
Head Screws  
(x2)

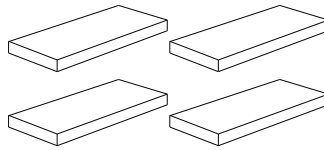
## You will also need:



Phillips Head  
Screw Driver



Pencil



Spacers\* (x4)

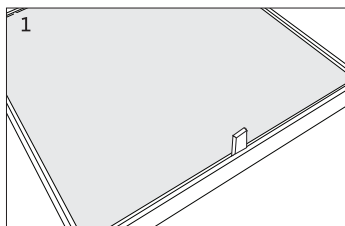


Ruler

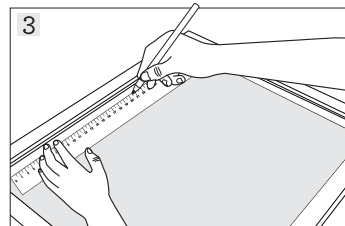
(\*) Spacers can be small off-cuts of wood or scrap pieces of foam or paper. Spacers are used to keep the artwork centred in the frame during assembly.

## ASSEMBLY

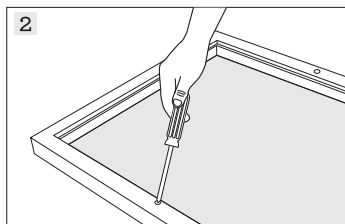
Place a towel or soft cloth over your table to protect your artwork and frame during assembly.



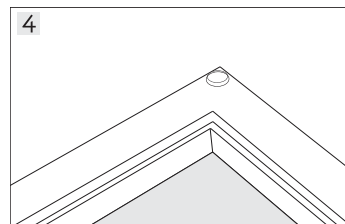
1 Place your artwork into the front of the frame. Centre the artwork using the four spacers, they will hold the artwork in place and avoid any movement during assembly.



3 Measure down each side for the placement of the Hanging Hooks. Ensure both sides are even. Secure both hooks in place using Button Head Screws (x4).



2 Secure the artwork in place using the Bugle Head Screws (x4) into the pre-drilled holes. Ensure the screws are secured tight, the head of the screw will sit flat with the back of the frame.



4 Place the foam dots onto the back bottom corners of the frame. This will ensure your frame will hang flat on the wall.

5. Remove the spacers from the back of the frame before hanging.

6. Use the remaining hardware enclosed to further hang your artwork on the wall.